



# DISCOVER

**EXCEPTIONAL SUPERYACHT BERTHING**  
IN THE HEART OF SOUTHAMPTON, UK



MDL MARINAS



# OCEAN VILLAGE MARINA SHAMROCK QUAY SAXON WHARF

Experience luxury  
and leisure in the  
centre of Southampton

## PREMIUM FACILITIES AND SERVICES

Our Southampton marinas feature state-of-the-art berths for superyachts up to 80 metres and expert lifting services for vessels up to 200 tonnes. Renowned for our exceptional customer service, we provide superyacht owners with the ultimate marina experience.

Ideally located near the vibrant city centre yet offering a relaxed retreat, each marina provides the perfect base to berth your yacht. Enjoy a variety of high-end amenities and dining options, all within reach. With 24/7 high-security services, you can relax and enjoy your time ashore with complete peace of mind.



## EXCEPTIONAL EXPERIENCES

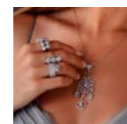
Our marinas are gateways to some of the finest experiences in the South of England. From award-winning dining to exclusive shopping, each visit offers something new to discover. It's no wonder that yachts return time and again to explore the treasures of the South.



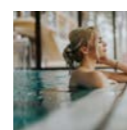
**Award-Winning Dining:** Indulge in fine dining at renowned restaurants such as The Hut on the Isle of Wight, Hartnett Holder & Co in Lyndhurst, The Pig In The Wall in Southampton, and Blue Jasmine along the Ocean Village waterfront.



**Exquisite Cocktail Bars:** Relax with a signature cocktail at The Grand in Southampton, HarBAR on 6th at Ocean Village, or The Haven Bar in Lymington.



**Luxury Shopping:** Find high-end treasures at Laings Jewellers in Southampton and browse unique boutiques along Lymington's famous high street.

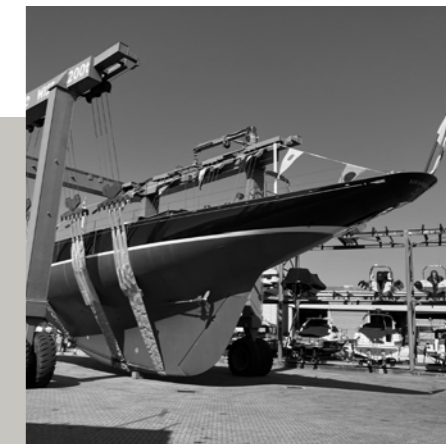


**World-Class Spas:** Unwind and rejuvenate at HarSPA in Ocean Village, or escape to the luxurious Chewton Glen and Lime Wood Hotel in the nearby New Forest.

Whether you're an owner, guest, captain, or crew member, we are committed to making your stay unforgettable.

## EU VAT BENEFITS

Take advantage of significant VAT savings when you berth your superyacht at our UK marinas. Yachts leaving EU boatyards can now enjoy VAT exemptions on all boatyard work when berthing in the UK. Instead of heading north to Norway, you can now enjoy the warmer UK climate and save money in the process.





# OCEAN VILLAGE MARINA

The UK's first and only 5-star marina





# OCEAN VILLAGE MARINA

50°53'42"N 1°23'26"W

Established as one of the most prestigious marinas along the south coast, Ocean Village Marina is conveniently located within walking distance of Southampton's vibrant city centre and its array of shops, bars, theatres, cinemas, and casinos.

Home to a 5-star luxury spa hotel with an award-winning restaurant and state-of-the-art gym, Ocean Village is much more than a marina. Surrounded by high-end bars, restaurants and an independent cinema, its waterfront offers guests the perfect blend of charm and sophistication, where eating out, enjoying a glass of wine or catching a movie is as much a part of the boating experience as the on-water adventure is.

Boasting a basin deep enough to welcome superyachts for stopovers or long stays, this established marina has proudly played host to the entire historic J Class fleet, and is renowned for hosting Round the World yacht races.

In addition, Ocean Village's proximity to the Solent opens a gateway to endless cruising possibilities. From the iconic Isle of Wight and the beautiful New Forest to the scenic Studland Bay and historic maritime city of Portsmouth, there's plenty of nearby destinations to explore. Further afield, Cherbourg, the Channel Islands and the Brittany coastline are all within easy cruising distance.

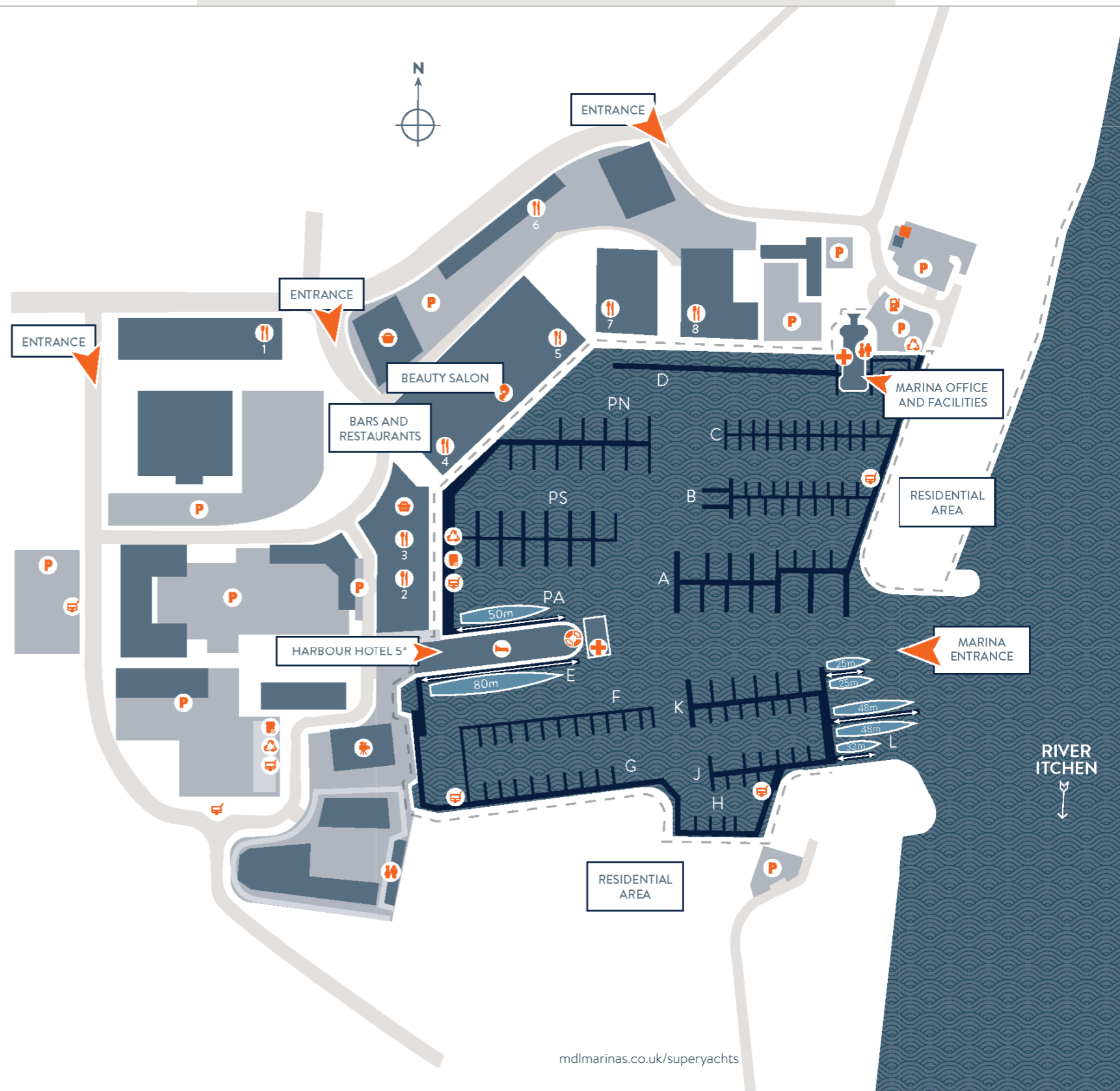
1 Channel Way, Southampton, Hampshire, SO14 3QF

## MARINA INFORMATION

- 7 superyacht berths (Max LOA 80m. Depth: 4m)
- Fully serviced pontoons including 3 phase electricity
- 24/7 security with CCTV coverage
- Staffing 365 days a year
- 776-space multi-storey Ocean Car Park
- On-site leisure facilities
- Super-fast MDL Wi-Fi
- Crew meeting space
- Parcel drop-off and collection points
- Nearby Chandlery
- Fuel (petrol and diesel) available at nearby MDL Port Hamble Marina. **XX** is a recommended bunkering location and can be contacted on: **XX**

## MARINA PLAN

- Floating dock office
- Marina office
- Launderette
- Showers & toilets
- Convenience stores
- 5-star Harbour Hotel & Spa
- Bars & restaurants
- Beauty salon
- Harbour Lights Picturehouse
- OVIC meeting rooms
- Car parking
- Secure storage for boating gear
- Waste/recycling
- Electric car charging points
- Electric boat charging point
- Superyacht berth locations
  - PA - 50m
  - E - 80m
  - L (starting from landside)
    - 1 x 32m
    - 2 x 48m
    - 2 x 25m







# SHAMROCK QUAY

Where history meets excellence





# SHAMROCK QUAY

50°54'32"N 001°22'47"W

Steeped in rich maritime history, Shamrock Quay takes its name from the iconic J-class yacht, Shamrock V, which had her first refit at the site in 1967. Today, it remains a welcome destination for superyachts, featuring five berths accommodating vessels ranging from 23m to 70m.

Conveniently located just a 30-minute walk from Southampton's city centre, Shamrock Quay offers guests an ideal location from which to explore the local area and neighbouring luxury MDL marinas. With ample opportunity to shop, dine and partake in leisure activities, it's a picturesque and convenient location to berth for the day or the season.

Shamrock Quay offers a warm welcome and a vibrant social scene, with a contemporary bar and restaurant serving high-quality modern cuisine. Plus, with an on-site fishmonger, you can always count on the freshest catch of the day.

The attractions of Shamrock Quay extend beyond its shore. With superb cruising access to the Solent, you'll enjoy exceptional sailing against the backdrop of alluring coastlines waiting to be explored.

William Street, Northam, Southampton, SO14 5QL

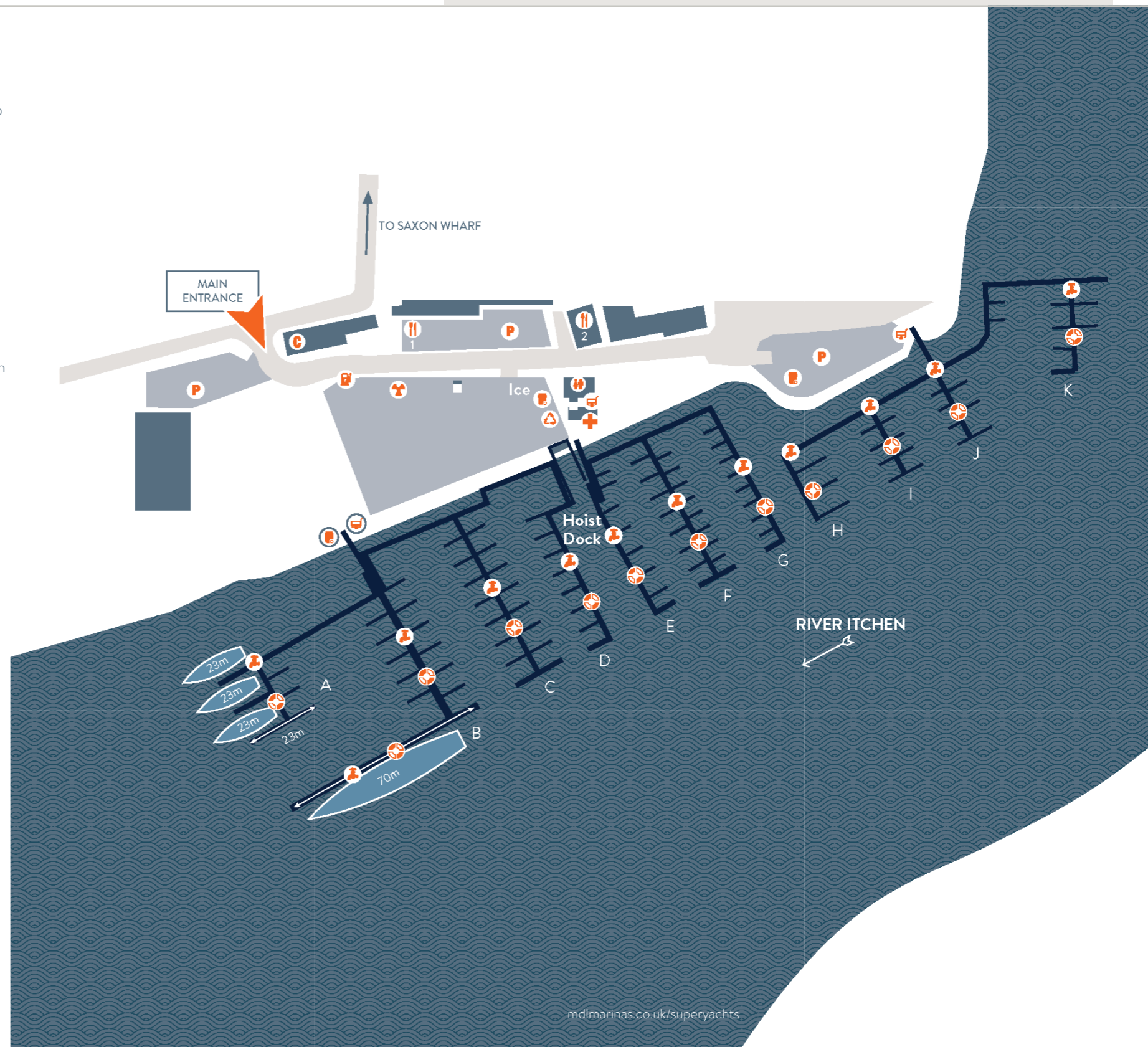


## MARINA INFORMATION

- 5 superyacht berths. Max LOA 70m. Depth: 2.7m
- Fully serviced pontoons including 16amp and 32amp electricity
- 75-ton travel hoist
- 24/7 security with CCTV coverage
- Staffing 365 days a year
- Super-fast MDL Wi-Fi
- Crew meeting space nearby
- Parcel drop-off and collection points
- Chandlery
- Fuel (petrol and diesel) available at nearby MDL Port Hamble Marina. XX is a recommended bunkering location and can be contacted on: XX

## MARINA PLAN

- Marina office/shop
- Hoist dock
- Showers & toilets
- Bar & restaurant
- Chandlery
- Car parking
- Waste/recycling
- Secure storage for boating gear
- Electric car charging points
- Superyacht berth locations:
  - B30, A-F - 70m
  - A8, A9, A10, A11 - 23m





# SAXON WHARF

Comprehensive superyacht service centre





# SAXON WHARF

50° 54' 43.9848"N 1° 22' 45.2064"W

Situated close to Ocean Village Marina and next to Shamrock Quay, Saxon Wharf is a Marine Service Centre dedicated to superyachts. Our comprehensive services cater to every need, offering expert yard, repair, and refit services with the capability to lift, move, and launch yachts up to 200 tonnes. With ample storage ashore and access to a wealth of specialist marine trades – both on-site and at nearby Shamrock Quay– we are fully-equipped to meet all your yacht’s maintenance and upgrade needs.

In recent years, notable classic sailing yachts have taken advantage of the refit services available at Saxon Wharf, including the 41m 1928 William Fife designed SY Cambria, the 43m SY Hetairos, the 40m J-Class SY Velsheda and the 37m J-Class SY Shamrock V.

Beyond its outstanding facilities, Saxon Wharf’s prime location close to the heart of Southampton gives you access to a vibrant social scene, airport links, and fantastic cruising opportunities, all conveniently located just moments away.

Lower York Street, Northam, Southampton, SO14 5QF

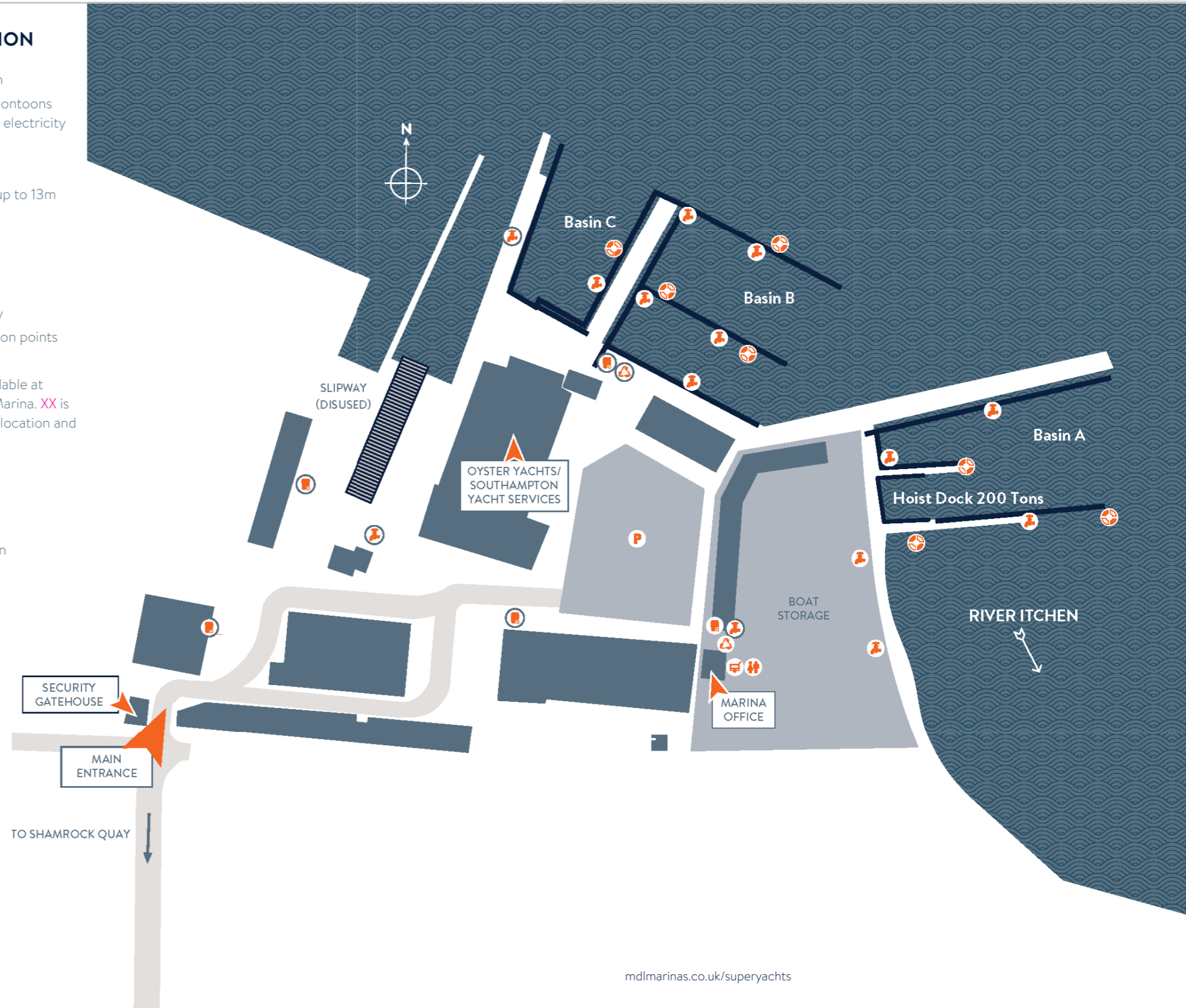


## MARINA INFORMATION

- 6 superyacht berths. Max LOA 70m. Depth: 3.5m
- Fully serviced, heavy-duty pontoons including 3 phase and 240v electricity
- 200-ton boat hoist
- Service Centre
- Dry stack facility for boats up to 13m
- 24/7 security
- Staffing 365 days a year
- CCTV coverage
- Super-fast MDL Wi-Fi
- Crew meeting space nearby
- Parcel drop-off and collection points
- Nearby chandlery
- Fuel (petrol and diesel) available at nearby MDL Port Hamble Marina. **XX** is a recommended bunkering location and can be contacted on: **XX**

## MARINA PLAN

- Marina office
- Security gatehouse
- Oyster Yachts/Southampton Yacht Services
- Boat storage
- Waste/recycling
- Hoist dock
- Showers & toilets
- Car parking
- Electric car charging points
- Superyacht berth locations





# OPPORTUNITY ON YOUR DOORSTEP

Southampton provides a desirable mix of luxury living, excellent transport links, exclusive leisure activities and close proximity to both nature and major cities, all while offering a relaxed maritime lifestyle.

## TRANSPORT LINKS

Southampton Airport < 5 miles (8km)

All London Airports within a two-hour commute.

Railway < 2 miles (3.2km)

Helicopter landing pad within 1km.

Executive travel **XX** provide both luxury airport transfers and executive chauffeur services Find out more at: **XX**

## A WORLD OF LEISURE

### Westquay Shopping Centre

A shoppers' paradise containing over 150 major retail stores including designer brands such as Tommy Hilfiger and BOSS, as well as many dining and leisure facilities.

### Oxford Street

Supplying some of the best of Southampton's fine dining, cocktail bars and nightlife.

### Genting Casino

All your favourite casino games including American Roulette, Blackjack, Three Card Poker plus new slots and Electronic Roulette, complemented with a late-night bar.

### SeaCity Museum

Bringing Southampton's Titanic story and outstanding maritime history to life through interactive experiences.

### Southampton Football Club

Home of 'The Saints', a well-established English Premier League team based at St. Mary's Stadium.

### The Mayflower Theatre

A prestigious theatre showcasing world-class performances, including West End musicals, opera, and live shows, along with premium dining options nearby.

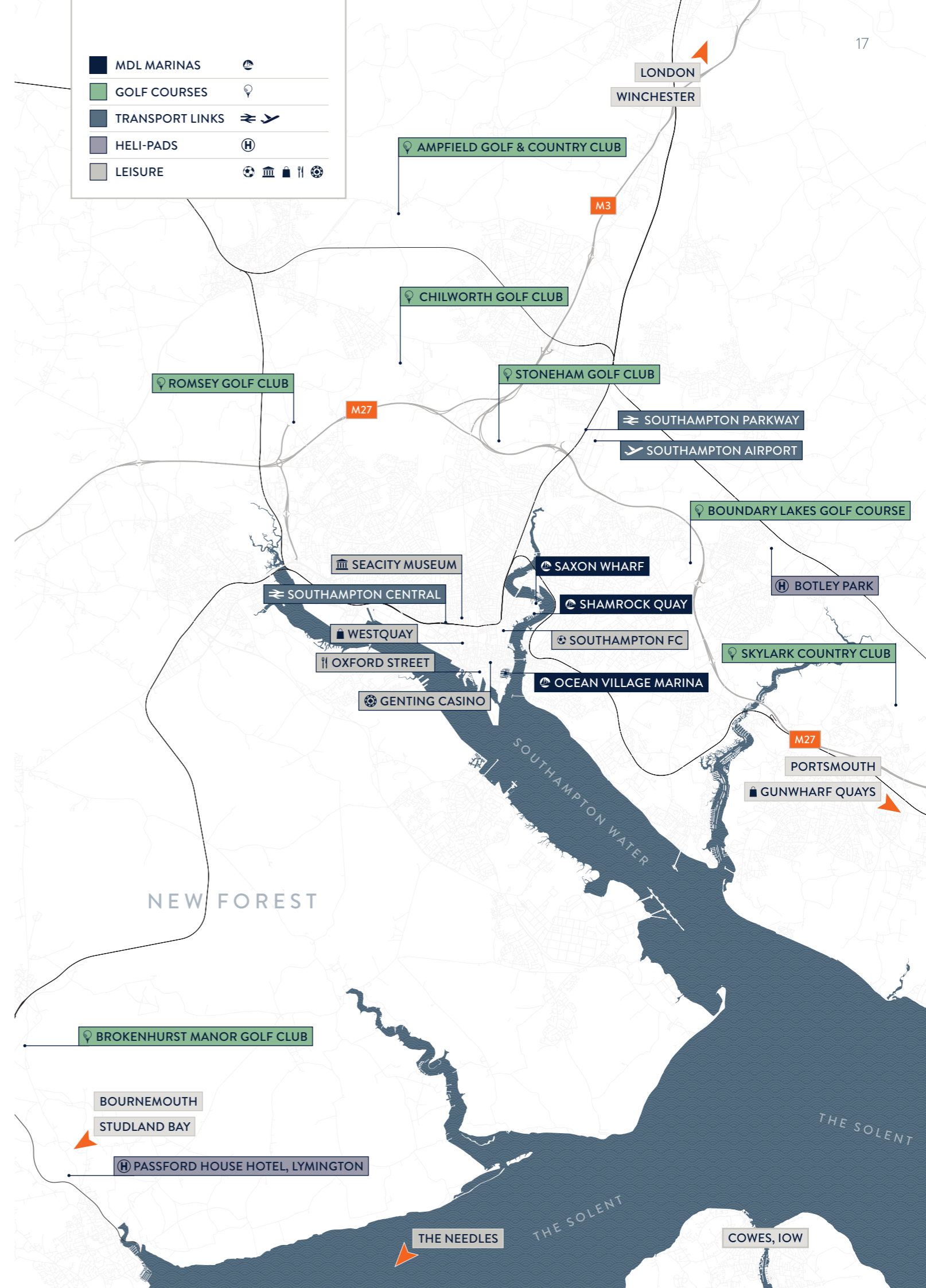
### Stoneham Golf Club

A premier golfing destination offering a challenging 18-hole course set within scenic parkland, with excellent facilities and a welcoming clubhouse.



## OUTSTANDING DESTINATIONS BY SEA

	Isle of Wight Cowes	New Forest Lymington	Portsmouth Harbour	Ocean Village Marina	Shamrock Quay	Saxon Wharf
Ocean Village Marina	8.8nm	10.1nm	12.3nm	-	0.8nm	1nm
Shamrock Quay	9.4nm	11nm	12.3nm	0.8nm	-	0.1nm
Saxon Wharf	9.5nm	11.1nm	12.4nm	1nm	0.1nm	-





# OUTSTANDING DESTINATIONS TO VISIT BY SEA



## COLWELL BAY -- 19NM

Located on the Isle of Wight's western coast, Colwell Bay is a must-visit destination for those seeking a blend of stunning natural scenery and luxurious dining. With its soft golden sands and inviting turquoise waters, this sheltered bay is perfect for a relaxing visit. Nearby, The Hut, an exclusive beachfront restaurant, offers exquisite seafood dishes and a relaxed atmosphere, ideal for a leisurely lunch with panoramic sea views. Whether enjoying watersports or dining in style, Colwell Bay provides the perfect mix of relaxation and indulgence.



## STUDLAND BAY -- 34NM

On the Dorset coast, Studland Bay is a natural haven for visitors. Its long stretch of golden sand and calm, shallow waters make it a perfect spot for watersports or a relaxing day on the beach. The surrounding heathland is part of a nature reserve, providing a picturesque backdrop and excellent opportunities for wildlife spotting. Studland Bay is also a short distance from Old Harry Rocks, another striking coastal feature. The peaceful surroundings and unspoilt beauty of the bay make it an ideal visit for those seeking tranquillity and a connection with nature.



## THE NEEDLES -- 21.2NM

A trip to the Isle of Wight isn't complete without witnessing the dramatic beauty of The Needles. These towering white chalk stacks rise from the sea, creating a breathtaking sight for yachts cruising the area. Nearby, Alum Bay is famous for its multi-coloured cliffs, while Totland Bay offers a tranquil anchorage with stunning views. Both locations provide crystal-clear waters, ideal for swimming, kayaking, or simply soaking in the natural beauty. The Needles' iconic beauty makes it an unforgettable maritime destination.



## PORTSMOUTH HARBOUR -- 12.3NM

A bustling maritime city, Portsmouth offers a vibrant mix of modern sophistication and history. Its renowned Gunwharf Quays is a luxury shopping destination offering high-end retail and fine dining, as well as excellent facilities for superyachts and a vibrant social scene, making Portsmouth a fantastic gateway for exploring the southern coast of England.



## OSBORNE BAY -- 9.5NM

Nestled on the northern coast of the Isle of Wight, Osborne Bay offers a peaceful and scenic escape. Sheltered by Osborne House, the former royal residence of Queen Victoria, this idyllic bay boasts crystal-clear waters perfect for swimming or paddleboarding. The historic backdrop adds a regal charm to the tranquil surroundings. Explore the estate's beautiful gardens, or simply relax onboard while taking in views of the stunning coastline.

With its tranquil atmosphere, Osborne Bay offers an idyllic anchorage for those seeking peace and privacy amidst natural beauty.



## NEW FOREST -- 10.1NM

For those wishing to swap coastal vistas for lush woodlands, the New Forest is a picturesque region. Famous for its ancient forests, wild ponies, and open heathlands, the area offers ample opportunities for nature walks. Nearby, the historic village of Beaulieu and its famous motor museum are not to be missed. For a more tranquil experience, visit Buckler's Hard, a charming riverside hamlet with a rich maritime history. Once a shipbuilding hub, it now offers a peaceful anchorage on the Beaulieu River, ideal for those seeking a quiet retreat surrounded by nature.

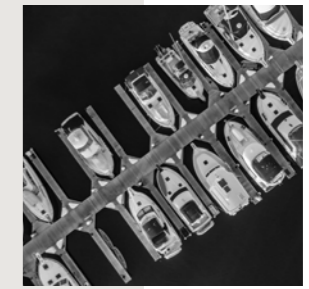
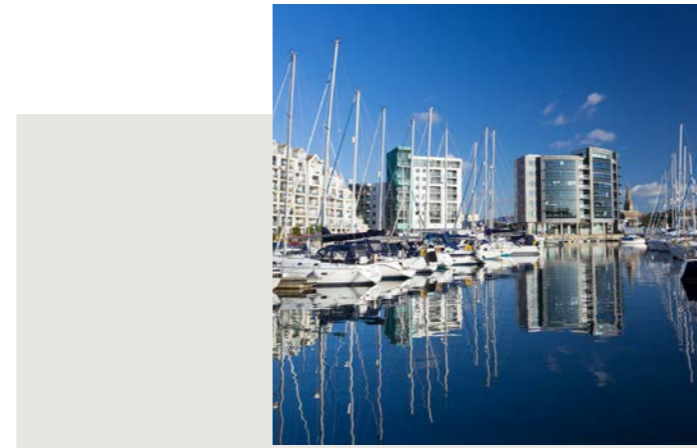
Please note, vessels over 24m must report movements to Southampton VTS. Harbour light dues are payable to Trinity House.





# PERFECT MDL STOPOVERS ACROSS THE UK

Beyond our Southampton marinas, we offer a network of 12 stunning marinas across the UK, capable of accommodating vessels 24 metres and above. Whether you're drawn to the charm of West Country or the vibrant South Coast, our marinas provide the ideal stopover for your luxury yacht. As the UK's largest marina group, we ensure the highest standards of service and security at every MDL destination.



## SUPERYACHT BERTHING

MARINA	MAX LOA in metres (Specific number i.e. not 24+m)	MAX DEPTH/DRAFT in metres (noting any caveats i.e. draft may vary depending on tides)
Bray Marina	Can't accommodate	
Brixham Marina	40m	4m dependant on tides
Chatham Maritime Marina	24m	3m
Cobb's Quay Marina	24m	2.3m
Hamble Point Marina	50m	2m
Hythe Marina Village	Can't accommodate	
Mercury Yacht Harbour	50m	2m
Northney Marina	Can't accommodate	
Ocean Village Marina	80m	4m
Penton Hook Marina	30m	1.2m
Port Hamble Marina	25m	3m
Queen Anne's Battery	30m	3.5m
Saxon Wharf	70m	3.5m
Shamrock Quay	70m	2.7m
Sparkes Marina	Can't accommodate	
Torquay Marina	40m	3m dependant on tides
Windsor Marina	Can't accommodate	
Woolverstone Marina	24m	2.5m



# CONTACT US

We offer a personalised service tailored to your needs. To discover how we can assist you, please contact:

## TIM MAYER

The Yacht Club, Ocean Village Marina

+44 (0) 7483 918986

t.mayer@mdlmarinas.co.uk

We look forward to welcoming you to our marinas.



# AGENTS

If you require the services of a UK agent:

MGMT can be contacted on:

info@mgmt yacht.com

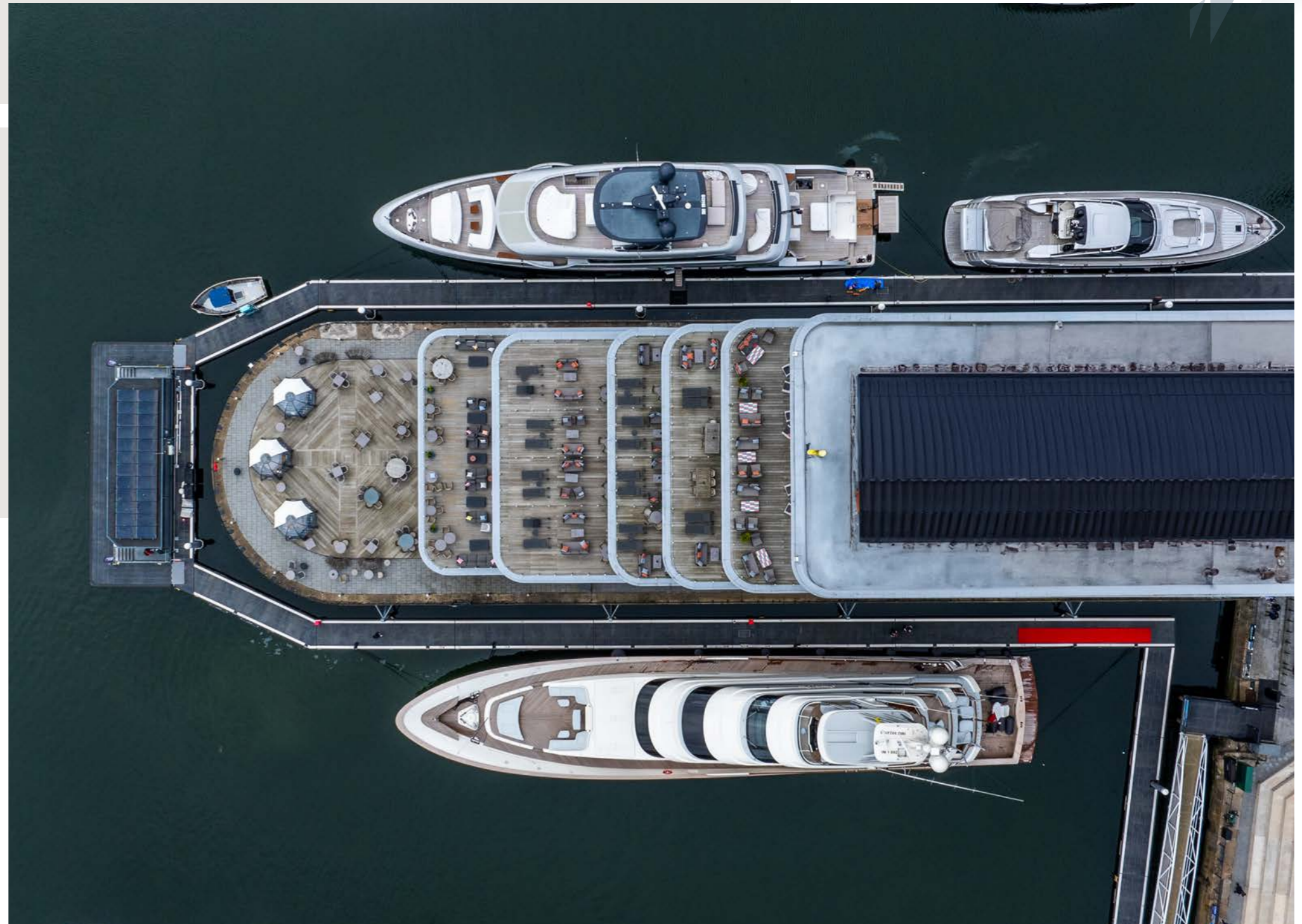
+44 (0)20 7193 3206

Superyacht Agency Services Southampton

can be contacted on:

info@superyachtagency.com

+44 (0)23 8022 3671







MDL MARINAS

[MDLMARINAS.CO.UK](http://MDLMARINAS.CO.UK)